

INDEX

WATER REPELLENT SEALERS

| | |
|---------------------------|--------|
| Protectacrete | Page 4 |
| Tile & Grout Sealer | Page 5 |
| Limestone Emulsion | Page 6 |
| Limestone Water Repellent | Page 7 |
| Timber Water Repellent | Page 8 |

WATER & STAIN PROOF SEALERS

| | |
|-----------------------|---------|
| Protectaseal | Page 9 |
| Protectaseal Enhancer | Page 10 |

SURFACE HARDENER

| | |
|-------------------|---------|
| Lithium Densifier | Page 11 |
|-------------------|---------|

SILANE SEALERS

| | |
|-----------------------|---------|
| Solid Silane | Page 12 |
| Protectasilane 100 | Page 13 |
| Protectasilane | |
| Sealer Use Comparison | Page 14 |
| Our Offices | Page 15 |

PROTECTACRETE

Protectacrete is a high quality silicone based concrete and masonry sealer. This clear penetrating water repellent sealer offers superior durability compared to surface-only treatments.

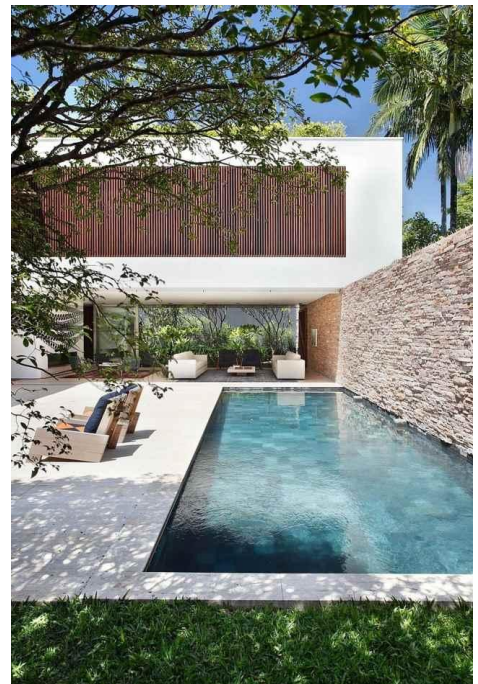
Protectacrete is designed to penetrate into the capillaries of masonry surfaces and renders the substrate water repellent. This results in the reduction of efflorescence or water borne staining materials, which are responsible for most masonry deterioration.

This product is a general use sealer that can be applied on bricks, natural stone, tiles and concrete providing long term protection against water penetration, mould growth and efflorescence. Our sealers are all non-hazardous and user-friendly.

Protectacrete can be applied using brush, roller or spray. However, it is recommended that the product is best applied by saturation flooding using a hand pressure spray or airless spray equipment.

FEATURES:

- Creates water repellency to masonry building materials
- Does not significantly change the original appearance and vapour permeability of the surface
- UV and alkali stable formulation
- Reduces water and chloride ion ingress by up to 95%
- Non-corrosive and non-toxic
- Permanently bonds to the substrate with no peel or blister
- Easy application and cost effective



VARIATIONS:

Protectacrete S is the solvent based version of the sealer and is best suited for dense, hard surfaces.

Protectacrete W is a water borne and low VOC alternative. It is best suited for more permeable substrates.

TILE & GROUT SEALER

Tile and Grout Sealer is a high quality, deep penetrating water repellent silane/siloxane sealer for tiles and grout.

This impregnant is designed to deeply penetrate into the capillaries of masonry surfaces and provide the substrate with a high quality water repellency. This reduces the absorption of water, efflorescence or other water-borne staining materials which are responsible for the bulk of the deterioration in masonry building materials. The treatment will not significantly change the appearance of the surface and the vapour permeability

Tech-Dry Tile and Grout Sealer can be applied on ceramic, terracotta, concrete and natural stone tiles. It is also suitable for other porous masonry building substrates. This product is suitable for both internal and external applications.



FEATURES:

- Penetrates deeply into masonry substrate surface.
- Permanently bonds to the substrate with no peel or blister.
- UV, alkali stable and durable formulation.
- Reduces water penetration, efflorescence and water-borne staining.
- Does not significantly change the surface appearance and vapour permeability.
- Easy application and cost effective.

LIMESTONE EMULSION

Limestone Emulsion sealer is a neutral, water-based water repellent sealer and surface binder for permeable Australian limestone.

It is a non-caustic and user-friendly product which is designed to penetrate deeply into the capillaries of limestone surfaces and render the substrate water repellent and strengthen the surface. It significantly reduces the absorption of water and other water-borne staining materials, which are major factors causing deterioration in limestone buildings.

Unlike other sealers, Limestone Emulsion will not significantly change the appearance and the vapour permeability of the limestone substrate.



FEATURES:

- Water-based emulsion with no volatile hydrocarbon solvents.
- Penetrates deeply into the limestone surface.
- Bonds to the substrate with no peel or blister and provides surface dust binding.
- UV, alkali stable and durable formulation.
- Reduces water penetration and water-borne staining and strengthens surface.
- Does not significantly change the surface appearance and vapour permeability.
- Non-caustic and user-friendly formula.

LIMESTONE WATER REPELLENT

Limestone Water Repellent is a traditional penetrating water repellent sealer specially formulated to seal and protect permeable limestone surfaces against water penetration and mould growth without affecting the natural limestone appearance.



FEATURES:

- No volatile hydrocarbon solvents within the formulation
- Penetrates masonry substrate surface
- Permanently bonds to the substrate with no peel or blister
- UV, alkali stable and durable formulation
- Reduces water penetration, efflorescence and water-borne staining
- Does not significantly change the surface appearance and vapour permeability
- Easy application and cost effective

TIMBER WATER REPELLENT

This sealer is not a stain or coating but a water-based penetrating silicone sealer which is absorbed into raw, natural timber, rendering it water repellent. This sealer does not peel or blister. The life of outdoor timber will be significantly extended by the use of Timber Water Repellent.

Timber Water Repellent may also be used to treat other neutral substrates such as fabric, paper, permeable natural stones and porous renders.

FEATURES:

- Fast water beading effect after application.
- Water-based, non-toxic, and non-caustic formulation.
- Bonds to the substrate with no peeling.
- UV, alkali stable and durable formulation.
- Reduces water absorption and water-borne staining.
- Does not significantly change surface appearance and vapour permeability.



PROTECTASEAL

Protectaseal is a high quality water and stain repellent silicone sealer for treating masonry substrates.

By penetrating deep into the substrate, Protectaseal offers more durable protection against staining. The protection includes resistance against staining from food, wine, tannin, and oil. The treatment does not change the surface appearance or vapour permeability of the substrate and can be used for concrete pavers and ceramic and natural stone tiles. It is ideal for both internal and external use on porous or polished surfaces.

USE:

Tech-Dry Protectaseal is best applied using a low pressure hand spray. It can also be applied using a mirror brush or roller.

VARIATIONS:

Protectaseal S is the solvent based version of the sealer and is best suited for hard dense finishes as in many natural stones and burnished or polished concrete.

Protectaseal W is an environmentally friendly, water borne, and low VOC alternative. It is best suited for more permeable substrates such as concrete pavers, exposed aggregate or honed concrete, concrete block and reconstituted stones.



FEATURES:

- Penetrates into the capillaries of the masonry surfaces
- Reduces oil, water and chloride ion ingress by up to 95%
- Good resistance to oil or water-based stains
- Reduce water absorption and algae/mould growth
- Penetrates and permanently reacts with masonry
- Offer durable protection and wearing resistance
- Non-film forming natural finishes with no change to surface appearance
- Easy to apply

PROTECTASEAL ENHANCER

Protectaseal Enhancer is a penetrating silicone sealer that combines excellent water and stain resistance with a deepening of the colours in the substrate.

Tech-Dry Protectaseal Enhancer produces an aesthetically pleasing finish by highlighting contrasting colours in the substrate. This can be particularly gratifying on concrete pavers, polished concrete, exposed aggregate, honed concrete, ceramic and natural stone tiles.

VARIATIONS:

Protectaseal Enhancer S is a solvent based sealer which is particularly suitable for hard, dense materials such as imported stone, basalt, polished or burnished concrete and ceramic tiles.

Protectaseal Enhancer W is a water borne sealer which is best suited for more permeable substrates. It is low VOC, environmentally friendly and is very easy to apply. It is possible to use Enhancer W on denser materials though users should be aware that penetration into dense substrate is likely to be reduced. We recommend use on natural stones, concrete blocks and pavers, driveways, clay bricks, tiles, and grouts and mortars.



FEATURES:

- Darken surface with minimum change of surface texture
- Excellent resistance to oil & water-based stains
- Reduce water absorption and algae/mould growth
- Penetrates and bonds to the masonry substrate
- Durable protection and wear resistance
- Easy to apply

LITHIUM DENSIFIER

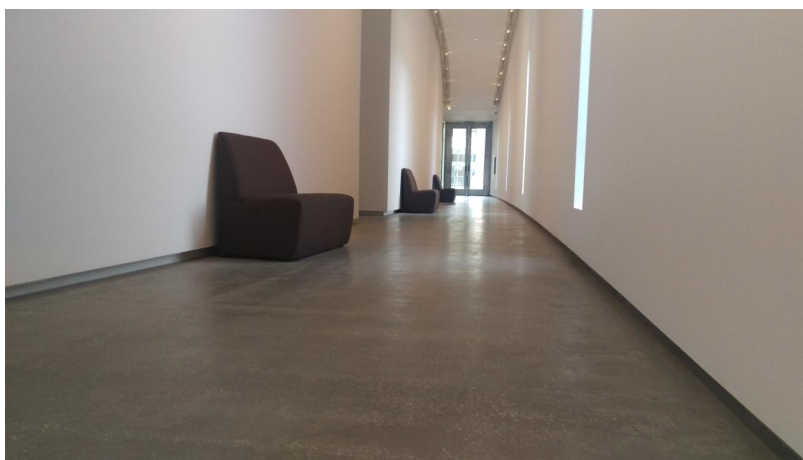
Lithium Densifier is a specially formulated penetrating sealer containing active lithium silicates. Typical applications include treating polished concrete floors in residential housing constructions, retail establishments, shopping centre foyers and manufacturing warehouses. It is also suitable for dust-proof or water-proof sealing of concrete masonry.

This sealer penetrates into the concrete surface and blocks the pores or capillaries by the formation of calcium silicate hydrate. This calcium silicate hydrate binds within the concrete matrix and hardens the concrete surface resulting in a hard, dense, dust free and traffic resistant surface finish. Smooth or gloss finishes can then be easily achieved by surface polishing.

Due to the high activity of lithium silicates, Tech-Dry Densifier accelerates the concrete polishing process, thus saving time and costs. Unlike traditional sodium silicates, this sealer is unlikely to leave residues such as white efflorescence or other unwanted residue discolorations on the treated surface.

FEATURES:

- Lithium silicates allow quick application with low risk of unwanted residues
- Accelerates the concrete polishing process therefore saving time and costs
- Penetrates into concrete beneath the surface ensuring durable protection
- Maintains appearance and slip resistance of the original concrete finish
- Reduces water absorption and water borne staining
- Environmentally friendly formulation and easy clean up with water
- Ready-to-use low viscose formula enables good penetration & easy application



SOLID SILANE

Solid Silane is a non-drip, thixotropic, water-based cream, which contains 80% active silanes. It is used for long term protection of high-end weather exposed reinforced concrete structures from the effects of wind driven rainwater, particularly in the control of chloride ion ingress.

The silane cream is a new concept that overcomes the problems associated with liquid silanes such as isobutyltriethoxysilane. Solid Silane can be applied to overhead and vertical surface without run off. The high penetration depths achieved with Solid Silane are due to the low volatility of the silane, combined with the long contact time with the surface. One coat of Solid Silane is generally enough to achieve similar penetration depths compared to several coats of liquid silanes. Therefore application costs can be significantly reduced.

Solid Silane is used on reinforced concrete structures such buildings, wharves, and bridges to prevent water and chloride ion induced reinforcement corrosion.

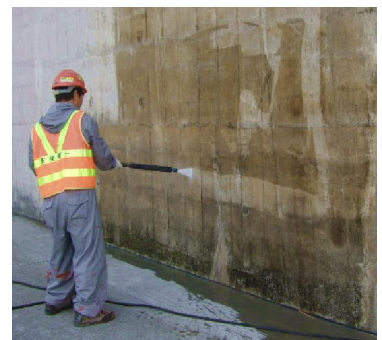
FEATURES:

- Water-based cream containing over 80% active silicones
- Ability to deeply penetrates into dense concrete
- Does not splash or run off on overhead and vertical surfaces
- No pollution to waterways and atmosphere due to no run off and low evaporation
- Easy quality control by measuring the wet film thickness
- Permanently bonds to the concrete with no peeling or blistering
- Forms UV, alkali stable and durable hydrophobic zone within concrete surface
- Significantly reduces water penetration and harmful salts such as chloride ions
- Does not significantly change the surface appearance and vapour permeability.



SOLID SILANE IN USE:

- Gateway Bridge, Brisbane, QLD
- Brisbane Port, Brisbane, QLD
- Tsing Ma Bridge, Hong Kong
- Westgate Bridge, Melbourne, VIC
- Bolte Bridge, Melbourne, VIC
- Tasman Bridge, Montagu Bay, TAS



Solid Silane has been exported to Europe since 2003. The product is re-labeled and sold via an agent in Europe for many important projects in North Europe

PROTECTASILANE 100

Protectasilane 100 is water repellent containing 100% octyltietoxysilane.

This sealer is used as a water repellent impregnate for concrete protection and penetrates deeply into the capillaries of the concrete to create a first class water repellency. Protectasilane 100 is typically designed as a high end water repellent sealer for critical structural concrete elements in water exposed situations. It protects concrete in weather exposed situations and from the effects of wind driven rainwater.

FEATURES:

- 100% active with no hydrocarbon solvent used
- Ability to deeply penetrate into dense concrete
- Permanently bonds to the concrete with no peeling or blistering
- Forms UV, alkali stable and durable siloxane structure within concrete matrix
- Reduces water penetration, efflorescence and harmful salts such as chloride ions
- Does not significantly change the surface appearance and vapour permeability

PROTECTASILANE

Just like Protectasilane100, Protectasilane is a high quality water repellent silane impregnate for masonry buildings.











This product is still designed to deeply penetrate into the capillaries of masonry surfaces and renders the substrate water repellent. This water repellent zone significantly reduces the absorption of water, efflorescence, and other water-borne staining materials. The treatment will not significantly change the appearance of the masonry substrates and the vapour permeability.

Protectasilane is recommended as a water repellent sealer for concrete and other porous masonry building substrates such as stones, bricks, and ceramic tiles and grout.

FEATURES:

- Penetrates into masonry substrate surface
- Permanently bonds to the substrate with no peeling or blistering
- UV, alkali stable and durable formulation
- Reduces water penetration, efflorescence and water-borne staining
- Does not significantly change the surface appearance and vapour permeability
- Easy application and cost effective

SEALER USE COMPARISON

| |  |  |  |  |  |  |  |  |  |  |
|---------------------------------|-------------------------------------------------------------------------------------|-------------------------------------------------------------------------------------|-------------------------------------------------------------------------------------|-------------------------------------------------------------------------------------|-------------------------------------------------------------------------------------|-----------------------------------------------------------------------------------|-----------------------------------------------------------------------------------|-----------------------------------------------------------------------------------|-----------------------------------------------------------------------------------|-----------------------------------------------------------------------------------|
| | PROTECTACRETE S | PROTECTACRETE W | TILE & GROUT SEALER | LIMESTONE EMULSION | LIMESTONE WATER REPELLENT | TIMBER WATER REPELLENT | PROTECTASEAL S | PROTECTASEAL W | PROTECTASEAL ENHANCER S | PROTECTASEAL ENHANCER W |
| Water Repellent | ✓ | ✓ | ✓ | ✓ | ✓ | ✓ | ✓ | ✓ | ✓ | ✓ |
| Oil Repellent | | | | | | | | | ✓ | ✓ |
| Enhancing Effect | | | | | | | | | ✓ | ✓ |
| Concrete, Reinforced Concrete | ✓ | ✓ | ✓ | | | | ✓ | ✓ | ✓ | ✓ |
| Clay, Brick, Terracotta | ✓ | ✓ | ✓ | | | | ✓ | ✓ | ✓ | ✓ |
| Paving, Tiles, Terrazzo | ✓ | ✓ | ✓ | | | | ✓ | ✓ | ✓ | ✓ |
| Marble, Travertine, Sandstone | ✓ | ✓ | ✓ | | | | ✓ | ✓ | ✓ | ✓ |
| Granite, Slate, Bluestone | ✓ | | ✓ | | | | ✓ | | ✓ | |
| Glazed Ceramic Tiles, Porcelain | ✓ | | ✓ | | | | ✓ | | ✓ | |
| Australian Limestone | | | | ✓ | ✓ | | | | | |
| Raw Timber | | | | | | ✓ | | | | |

OUR OFFICES

VICTORIA

Tech-Dry Building Protection Systems Pty Ltd
(Head Office)
177 - 179 Coventry Street
South Melbourne - VIC 3205

Phone: 03 9699 8202



NEW SOUTH WALES

Tech-Dry Building Products
PO Box 4124 Penrith Plaza
Penrith, NSW 2750

Phone: 1800Techdry (1800 832 437)



SOUTH AUSTRALIA

Ace Waterproofing (trading as Tech-Dry SA)
244-246 Payneham Road
Payneham SA 5070

Phone :08 8132 1166

QUEENSLAND

Aus-Seal Protection Systems Pty Ltd
2/48 Lancewood Circuit
Robina QLD 4226

Phone: 07 5575 7759

For further locations, contact the Tech-Dry Head Office on 03 9699 8202