

INDEX

Emulsion KR2	Page 4
Block Emulsion	Page 5
Silipell SP2	Page 6
Salt Retarder & Powdersil 60	Page 7
TechdryAd Mortar Additive & TechdryAd Quickset	Page 8
Emulsion GPE50P & Emulsion ADM80-1	Page 9
Tech-Dry Masonry	Page 10
Our Offices	Page 11



EMULSION KR 2

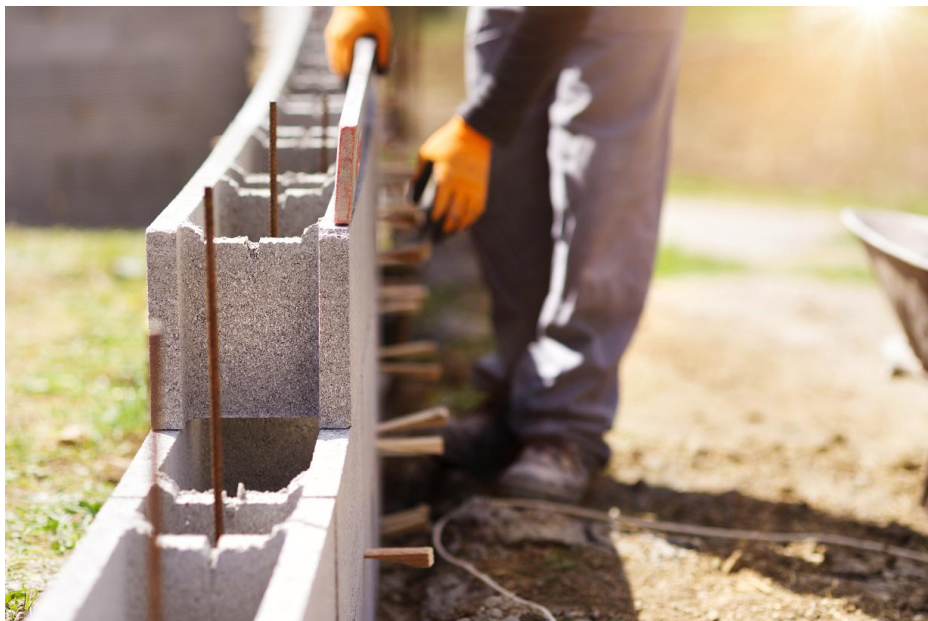
Emulsion KR2 is an innovative admixture for dry-pressed concrete to make it permanently water repellent and to strengthen its structure.

When Emulsion KR2 is incorporated into the production of dry-pressed concrete products, the permeability to water and the occurrence of unsightly efflorescence is virtually eliminated. This enhances the intrinsic quality of pressed concrete products, thus reducing the damage caused by weathering-related water uptake and efflorescence.

It is designed to be used in the manufacturing of load-bearing blocks, decorative coloured blocks, and blocks for retaining walls and basements. It may also be added into concrete pavers or other pressed concrete masonry or products made by similar procedures.

FEATURES:

- Reduces water absorption and efflorescence by up to 80%
- Product remains permanently bonded to the substrate and cannot be washed out
- Does not leave an oily residue on the masonry substrate
- The degree of water resistance can be varied by altering the dosage rate
- Water-based silicone nano-technology with no hazardous material emitted during use



BLOCK EMULSION

Similar to Emulsion KR2, Block Emulsion is an innovative admixture for dry-pressed concrete masonry to make the products water and salt resistant. The use of Block Emulsion enhances the intrinsic quality of pressed concrete products by reducing the damage caused by weather-related water uptake and efflorescence.

Block Emulsion is designed to be a water repellent admixture and is added during the manufacture of dry-pressed concrete products. These including load-bearing blocks, decorative blocks, coloured blocks and blocks for retaining walls and basements. It may also be added into the production of concrete pavers or other pressed concrete masonry.

FEATURES:

- Reduces water absorption and efflorescence by up to 80%
- Permanent bonding to the substrate & cannot be washed out
- Does not leave an oily residue
- Water-based technology with no hazardous material emitted



SILIPELL SP2

Silipell SP2 is a water repellent admixture containing silane/siloxane for concrete masonry with enhanced water-repellent performance.

Silipell SP2 is designed as an admixture for precast concrete including ready-mix concrete, slump concrete, cement mortar/render or any cementitious products. When this admixture is incorporated into concrete mix, the permeability to water and the occurrence of unsightly efflorescence is significantly reduced. The use of this admixture enhances the intrinsic quality of concrete products by reducing the damage caused by weathering-related water uptake and efflorescence.

FEATURES:

- Suitable for a variety of concrete products including wet-cast and dry-mix
- Significantly reduces water absorption and efflorescence
- Improves concrete workability and external finish
- Permanently bonds to the substrate and cannot be washed out
- Contains no VOC and no hazardous materials



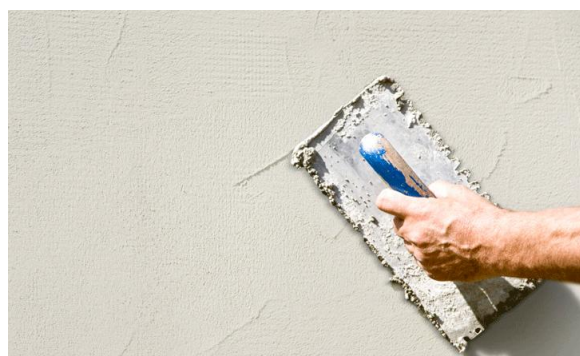
SALT RETARDER

Salt Retarder is a water repellent admixture which inhibits the penetration of water and salts when added to cement/sand renders. It plasticises the mix and promotes water and salt resistance in the final render. Using Salt Retarder in cement/sand render mix eliminates the need for separate plasticisers, such as lime and other waterproof additives.

Salt Retarder is recommended as a water repellent admixture for a cement/sand render specifically after the installation of a silicone damp course to prevent residual salt and water migration. It may also be used on a new wall to provide water/salt-resistance to cement/sand render. Salt Retarder can also be used as a water repellent admixture for cement/sand mortars.

FEATURES:

- Non-toxic water-based formulation.
- Improves workability of cement/sand renders.
- Increases adhesion of cement/sand renders.
- Reduces water penetration, efflorescence and water-borne staining.
- Does not significantly change vapour permeability of cement/sand renders.
- Easy to use and cost effective.



POWDERSIL 60

Powdersil 60 is highly effective silicone-based water repellent admixture designed as a free-flowing powder form for cementitious products. Powdersil 60 can be blended with dry ingredients of cementitious material to promote hydrophobic properties. It is particularly useful in manufacturing of grouts, joint fillers, mortar and façade rendering applications.

FEATURES:

- Reduces water absorption and efflorescence
- Remains permanently bonded in the entire substrate and cannot be washed out
- Does not leave any oily residue on the substrate
- Easy to mix with other cementitious ingredients and disperse in water

TECHDRYAD MORTAR ADDITIVE

Techdryad Mortar Additive is a water repellent admixture for cement/sand mortars. It not only makes the mortar water and salt resistant, but it also improves the adhesion of the mortar to the water repellent Tech-Dry Blocks (for more information see page 10). This product increases the workability of the mortar mixture.

Techdryad Mortar Additive is recommended as a water repellent admixture for cement/sand mortar designed specifically for laying water repellent concrete Tech-Dry Blocks. It may also be used as a water resistant admixture for cement and sand renders. This product also works for normal bricks and blocks, though is recommended to use in conjunction with Tech-Dry Blocks.

FEATURES:

- Non-toxic water-based formulation
- Improves workability of cement/sand mortars
- Increased adhesion of cement/sand mortars
- Reduces water penetration, efflorescence and water-borne staining
- Does not significantly change vapour permeability of the mortars
- Easy to use and cost effective



TECHDRYAD QUICKSET

Techdryad Quickset is an admixture used as a setting accelerant in cement mortars. It is designed to be used in conjunction with Techdryad Mortar Additive to help accelerate the setting times in the mortar when laying Tech-Dry Blocks (see page 10) in colder climates where the temperature is low, or when fast setting mortar is required.



EMULSION GPE 50P

Emulsion GPE50P is a silane/siloxane emulsion. It is used to produce penetrating water repellent sealer with enhanced surface beading effect.

Emulsion GPE50P can achieve near equivalent surface beading to that of a solvent-based silane/siloxane sealer. After the dilution with deionised water, Emulsion GPE 50P can be used as a water repellent penetrating sealer. The sealer is suitable to treat permeable natural stone, concrete, brick, tile and render. This product deeply penetrates into the capillaries of masonry substrates rendering the surface water repellent.

Emulsion GPE50P can also be used as a water repellent additive to latex paints/coatings to increase the water resistance of the coating film and improve the durability of coating against natural weathering.



FEATURES:

- Reduces water absorption and algae/mould growth in latex paintings
- Penetrates and permanently bonds to masonry
- UV and alkali stable and wearing resistance
- Non-film forming and no change to appearance
- Water-based silicone nano-technology with no VOC

EMULSION ADM80-1

Emulsion ADM80-1 is a solvent-free (no VOC) silane/siloxane emulsion. The silane/siloxane additive reacts with the fillers or aggregates within the textured coating film resulting in permanent water repellent effect.

The use of Emulsion ADM80-1 is recommended for exterior textured coatings, which are popular due to their architecturally-appealing nature. Such coatings are by nature very permeable to water. These coatings have relatively poor weathering resistance, causes discolouration, efflorescence and general degeneration to the coating.

FEATURES:

- Reduces water absorption and algae/mould growth in textured coatings
- Penetrates and permanently bonds to masonry
- UV and alkali stable and wearing resistance
- Non-film forming and no change to appearance
- Water-based silicone nano-technology with no VOC

TECH-DRY MASONRY

Utilising pre-sealing nanotechnology, Tech-Dry Masonry is pressed concrete products manufactured using Tech-Dry's range of innovative silicone water repellent admixtures. These admixtures significantly reduce water absorption in the concrete, and hence reduce the presence of unsightly long term efflorescence and mould discoloration.

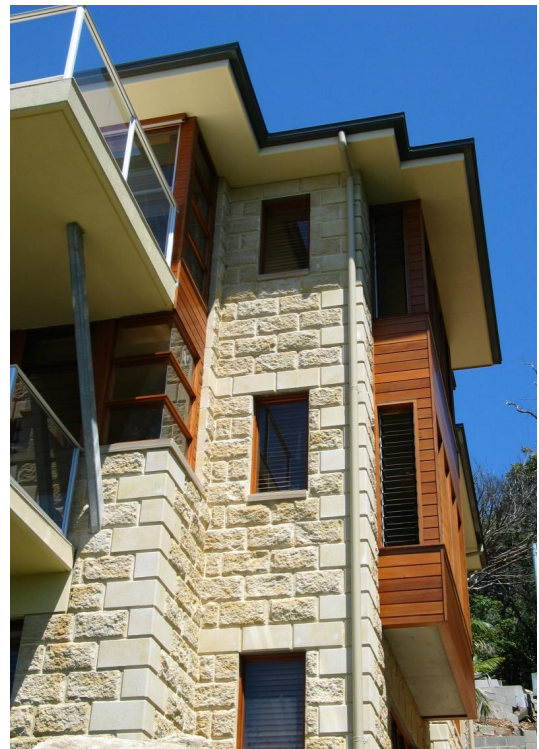
The scientific breakthrough of pre-sealing nanotechnology means that these water repellent admixtures become a permanent integral part of the concrete for its entire life, which means, issues such as mould growth, erosion damage due to the effects of salt from sea spray or salt-chlorinated pools or rising damp are eliminated. Also, as the building structure remains dry, it is an environmentally friendly as the evaporation from damp external walls use energy, and the surface does not need any further treating.

Tech-Dry Masonry is manufactured as decorative concrete blocks, bricks, pavers, retaining wall units and tiles, which can be made with either close to natural stone appearance, innovative textures or contemporary colours.

Tech-Dry Masonry is available Australia-wide and overseas.

FEATURES:

- Long term resistance to moisture, efflorescence and mould
- No rising damp
- Surface remains clean, pristine and colour-fast
- Masonry remains dry and can be laid in wet weather
- Innovative textures and contemporary colours available



OUR OFFICES

VICTORIA

Tech-Dry Building Protection Systems Pty Ltd
(Head Office)
177 - 179 Coventry Street
South Melbourne, VIC 3205

Phone: 03 9699 8202

SOUTH AUSTRALIA

Ace Waterproofing (trading as Tech-Dry SA)
244 - 246 Payneham Road
Payneham, SA 5070

Phone :08 8132 1166

NEW SOUTH WALES

Tech-Dry Building Products
PO Box 4124 Penrith Plaza
Penrith, NSW 2750

Phone: 1800Techdry (1800 832 437)

TASMANIA

Build Tech Supplies PTY LTD
34 Derwent Park
Derwent Park, TAS 7009

Phone: 03 6273 5800

For further locations, contact the Tech-Dry Head Office on 03 9699 8202

SOME OF THE COMPANIES THAT USE OUR PRODUCTS

